

KADHDHOO INTERNATIONAL AIRPORT DEVELOPMENT



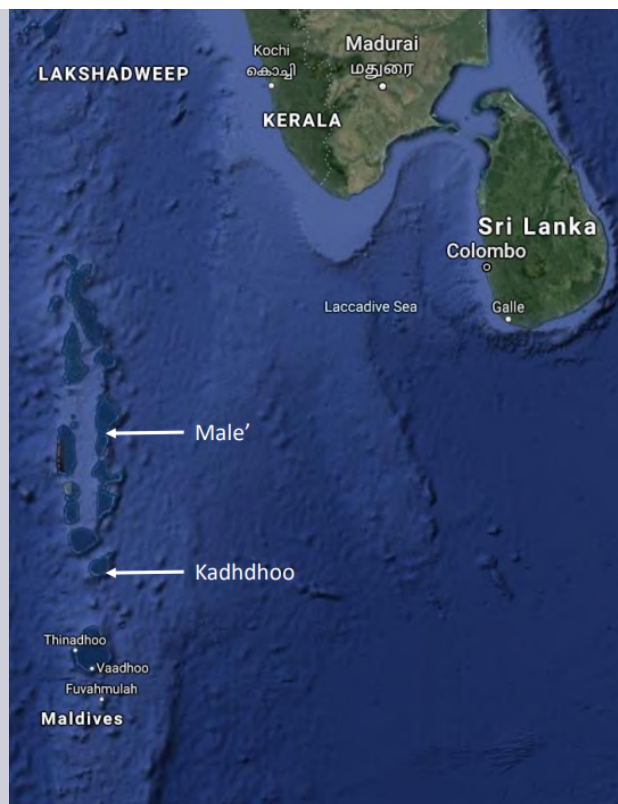


Project Site

Kadhdhoo Island
Laamu Atoll
South Central Maldives

Land area:
107 Ha./ 264 Ac.

Distance from Male': 256 km
Distance from Colombo: 900 km
Distance from Delhi: 3007 km



Scope:

- Runway 2400m x 45m - design aircraft type A320
- Dredging, reclamation & shore protection
- ATC tower
- Aprons, taxiway, hangars
- Fuel farm
- Roads and utilities
- Harbor, supply and passenger jetties
- Vehicles, machineries and equipment
- Passenger terminal (with retail outlets and other amenities)
- Office buildings
- Seaplane runway, terminal and platforms
- Cargo complex and bonded warehouse
- Inflight catering
- Lounge
- Airport to cater to direct flights from the Middle East, South East Asia and South Asia

Seeking investors / contractors on EPCF model

Kadhdhoo
International Airport
is envisioned to have
the ability to cater to
1 million passengers
per annum



DEVELOPMENT CONCEPT



More investment opportunities available in areas of Fisheries, Agriculture, Maritime and Trade...

where you start



UNSOLICITED PROPOSALS POLICY

Submit your proposals to the Ministry of Economic Development at proposals@trade.gov.mv

The USP process will take you through 5 easy steps

1



Pre-submission and concept review

2



Submission and compliance check

3



Strategic Assessment

4



Negotiation and Finalization of key terms

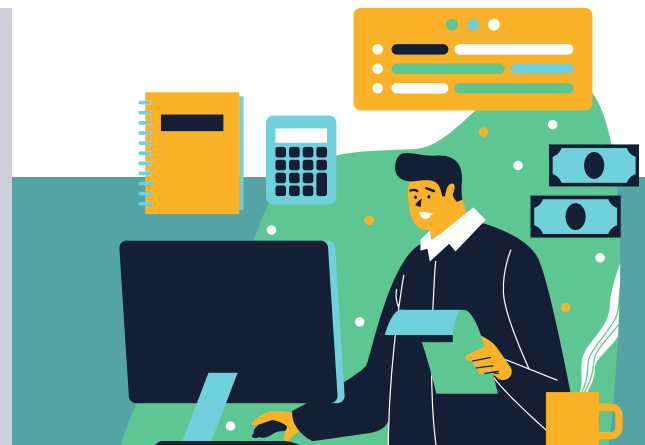
5



Enter into agreement

For more information, contact us at:

INVEST MALDIVES
MINISTRY OF ECONOMIC DEVELOPMENT
4TH FLOOR, VELANAAGE BUILDING
AMEER AHMED MAGU, 20096
investmaldives@trade.gov.mv



We look forward to welcoming you to Laamu

